



EMPLOYER SURVEY

(40 employees participated to the employer survey)

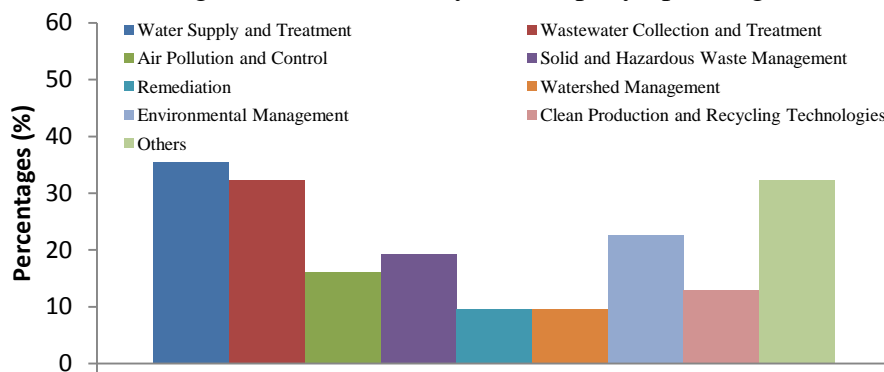
1. Name Surname

.....

2. Name of the company

.....

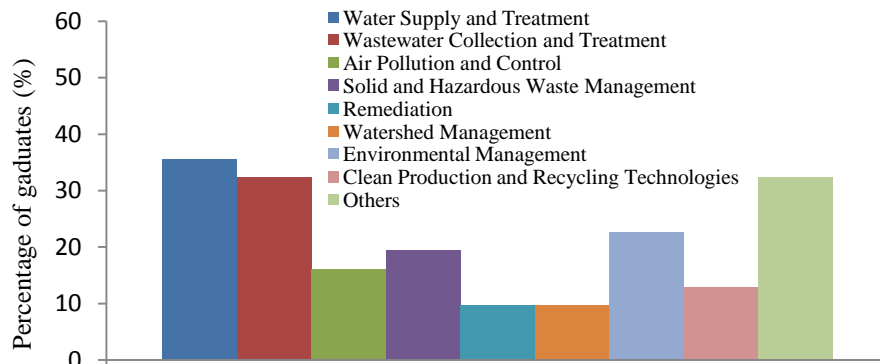
3. Of the following fields, in which is your company operating? (You may select more than one)



4. If you answered “Other” to question 3, please specify the sector of your company.

- Construction and operation of natural gas pipelines
- Innovative processes
- Production of clinker and cement
- Management of water lose
- Industrial water conditioning, production of chemicals needed for wate quality
- Marketing of treatment and mine chemicals, construction of biogas plants
- Management of rain water

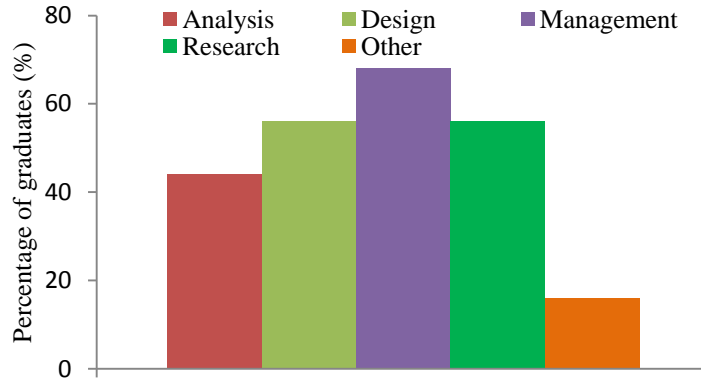
5. Please choose the field that your ITU Environmental Engineering Department alumni employee is working on (You may select more than one).



6. If you answered “Other” to question 5, please specify the field.

.....

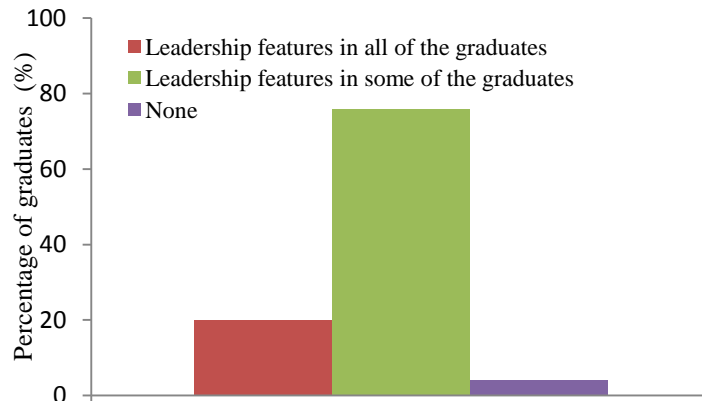
7. ITU Environmental Engineering Department alumni employees in your company are working on which of the following areas? (You may select more than one)



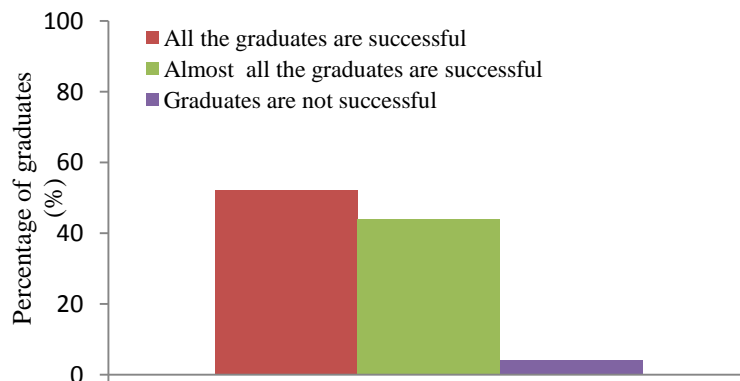
8. If you answered “Other” to question 7, please specify the area.

- Marketing and Sale
- Preperation of tender documents
- Customer and technical service

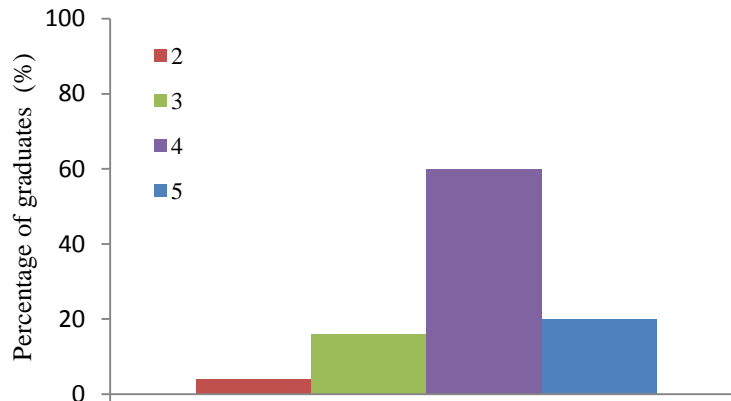
9. Do you think that ITU Environmental Engineering Department alumni employees in your company have leadership and management qualifications?



10. Do you think that ITU Environmental Engineering Department alumni employees in your company are successful at their professional career?

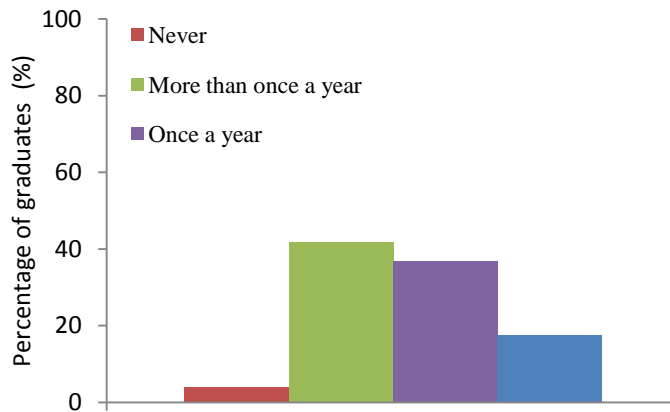


11. What is the degree of effort that ITU Environmental Engineering Department alumni employees in your company to improve their knowledge? (1:Lowest; 5:Highest)



12. Of the following categories, what is the participation rate of ITU Environmental Engineering Department alumni employees in your company?

- | | |
|---|--------------------|
| <i>Education seminar</i> | <i>Fairs</i> |
| <i>Certificate program</i> | <i>Conferences</i> |
| <i>Professional development courses</i> | <i>Other</i> |



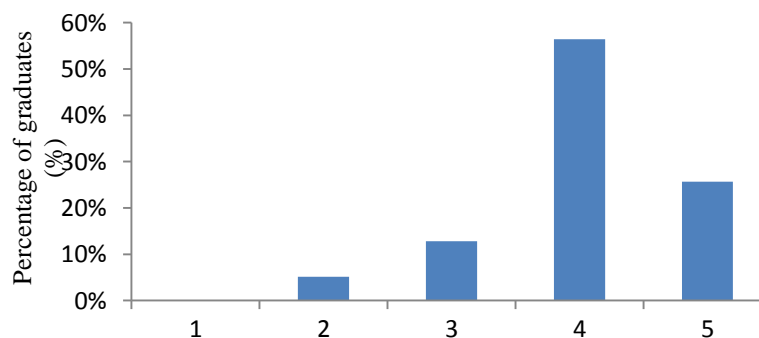
13. If you answered “Other” to question 23, please specify the category.

.....

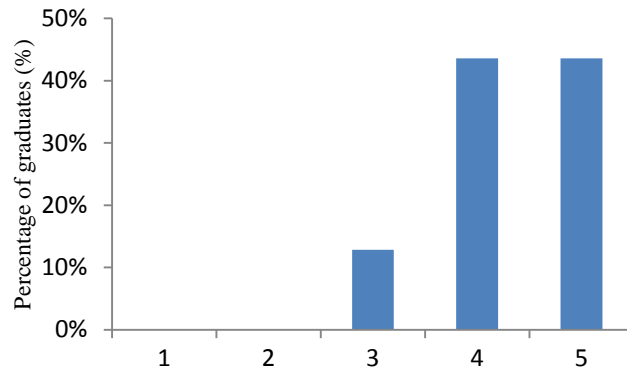
14. Of the following qualifications, please rate the ITU Environmental Engineering Department alumni employees in your company.

(1: Very weak; 2: Weak; 3: Moderate; 4: Good; 5: Very good)

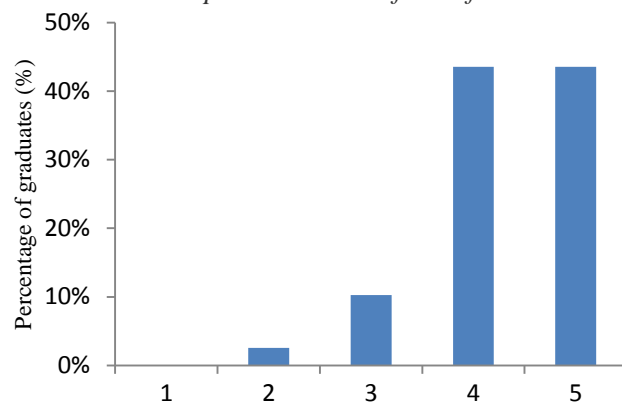
An ability to design an environmental system, component or process with an integrated approach considering the multi-realistic constraints



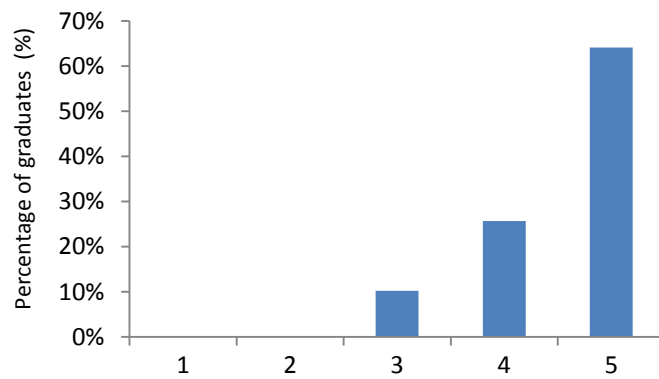
An ability to work individually, in team and to participate in multi-disciplinary working groups



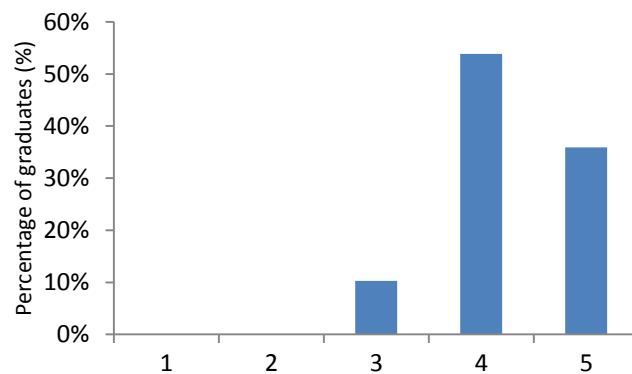
An ability to identify, formulate and solve problems in the field of environmental engineering



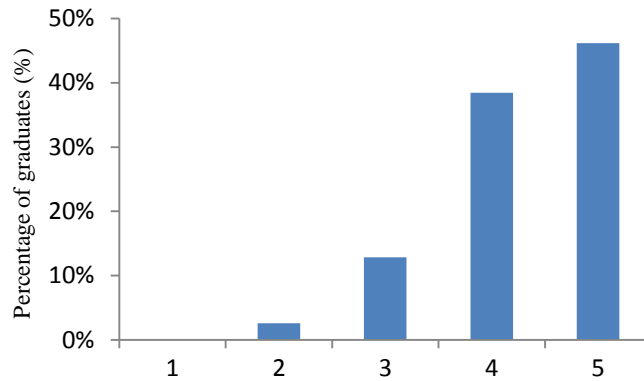
An understanding of professional and ethical responsibility



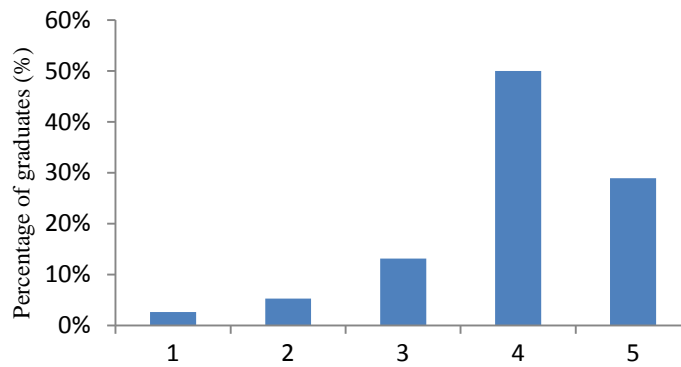
An understanding of the impact of environmental engineering solutions in a global and societal context within the framework of sustainability and environmental policy



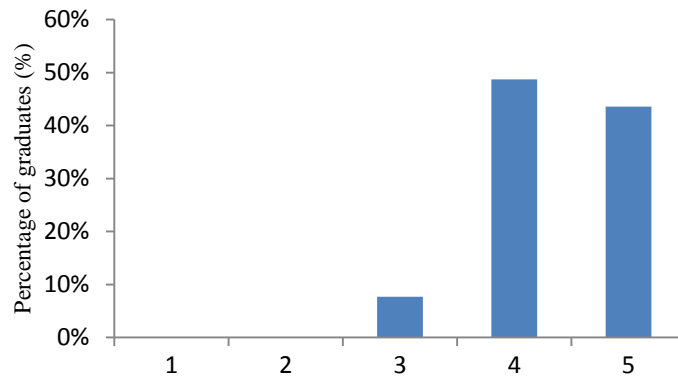
A recognition of the need for, and an ability to engage in life-long learning



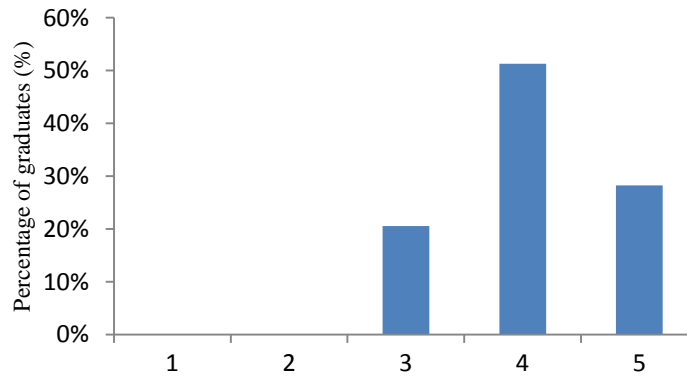
A knowledge of contemporary issues



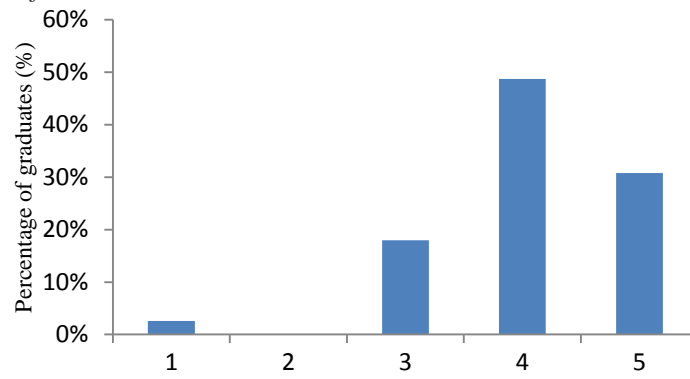
An ability to use the techniques, skills, and modern engineering tools required for Environmental Engineering practice



An ability to be innovative and pioneer in the field of environmental engineering



Technical and scientific fundamentals



An ability to take an initiative and management

