

**SSPC Data According to Environmental Engineering Undergraduate Program for Past 5 Years**

**30% English**

<b>Year of Entry</b>	<b>Min. SSPC Score</b>	<b>Max. SSPC Score</b>	<b>Min. Ranking</b>	<b>Max. Ranking</b>	<b>Average Ranking</b>
2016	382	438	60677	27709	53858
2015	365	393	52672	35620	48285
2014	379	429	50334	24966	46962
2013	373	410	50618	30663	45245
2012	406	441	48265	30390	43734
2011	442	477	43446	25807	39702

**SSPC Data According to Environmental Engineering Undergraduate Program for Past 5 Years**

**100% English**

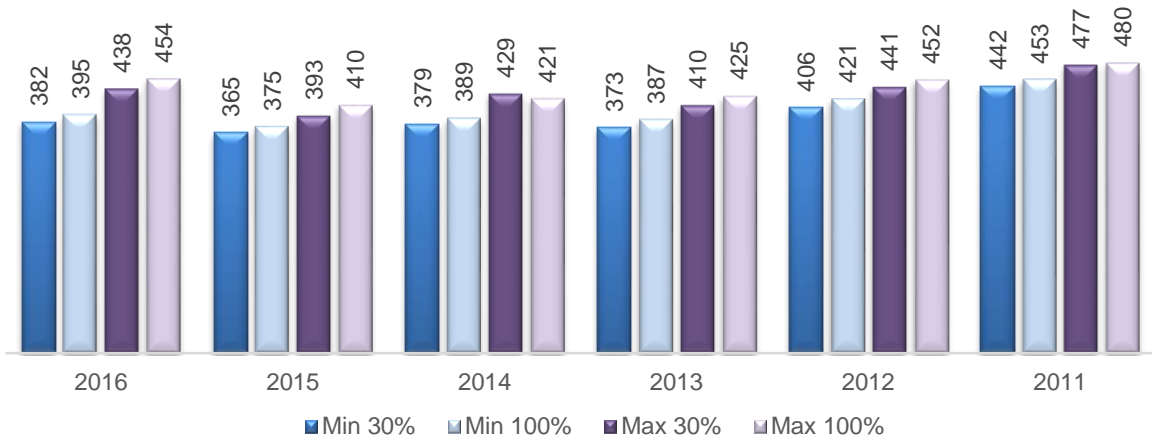
<b>Year of Entry</b>	<b>Min. SSPC Score</b>	<b>Max. SSPC Score</b>	<b>Min. Ranking</b>	<b>Max. Ranking</b>	<b>Average Ranking</b>
2016	395	454	52347	19918	46565
2015	375	410	46053	26549	41225
2014	389	421	44897	28577	39687
2013	387	425	42930	23809	38536
2012	421	452	40425	24997	36110
2011	453	480	37535	24268	34502

**SSPC Data According to Environmental Engineering Undergraduate Program for Past 5 Years**

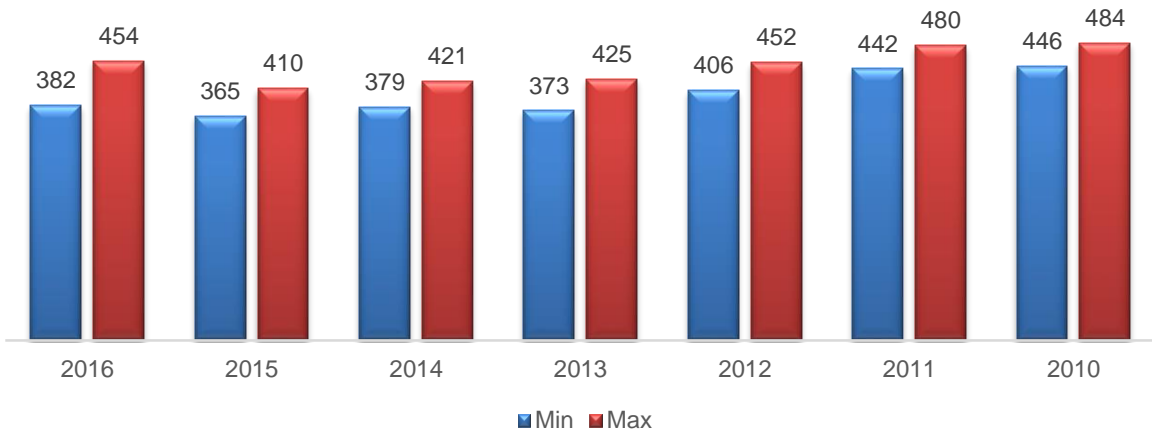
**30% & 100% English**

<b>Year of Entry</b>	<b>Min. SSPC Score</b>	<b>Max. SSPC Score</b>	<b>Min. Ranking</b>	<b>Max. Ranking</b>
2016	382	454	60677	19918
2015	365	410	52672	26549
2014	379	421	50334	28577
2013	373	425	50618	23809
2012	406	452	48265	24997
2011	442	480	43446	24268

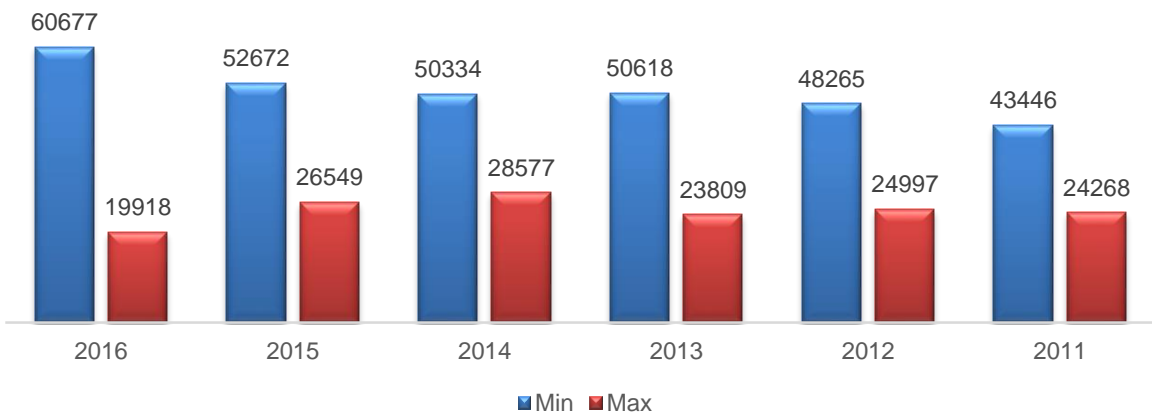
### 2011-2016 Minimum-Maximum SSPC Scores



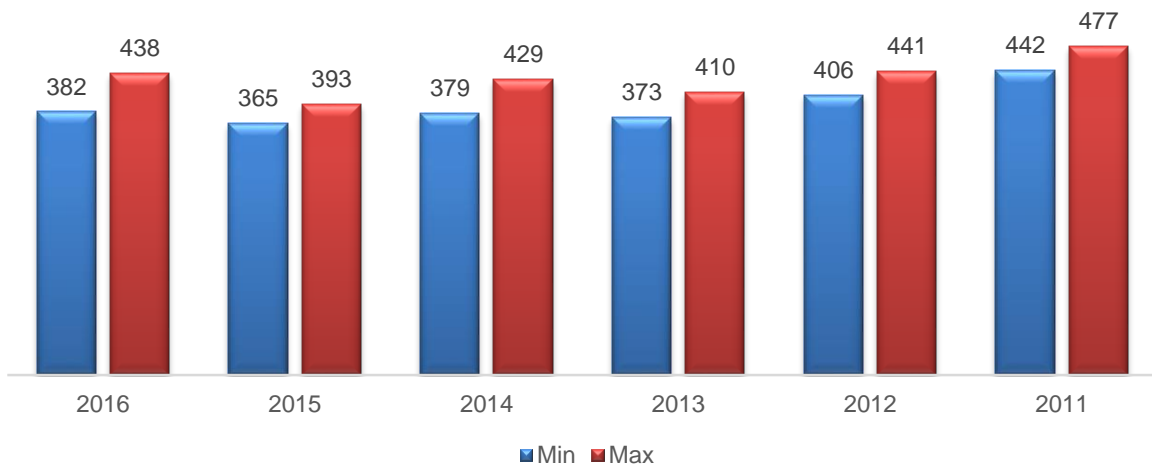
### 2011-2016 Minimum-Maximum SSPC Scores



### 2011-2016 Minimum-Maximum Rankings



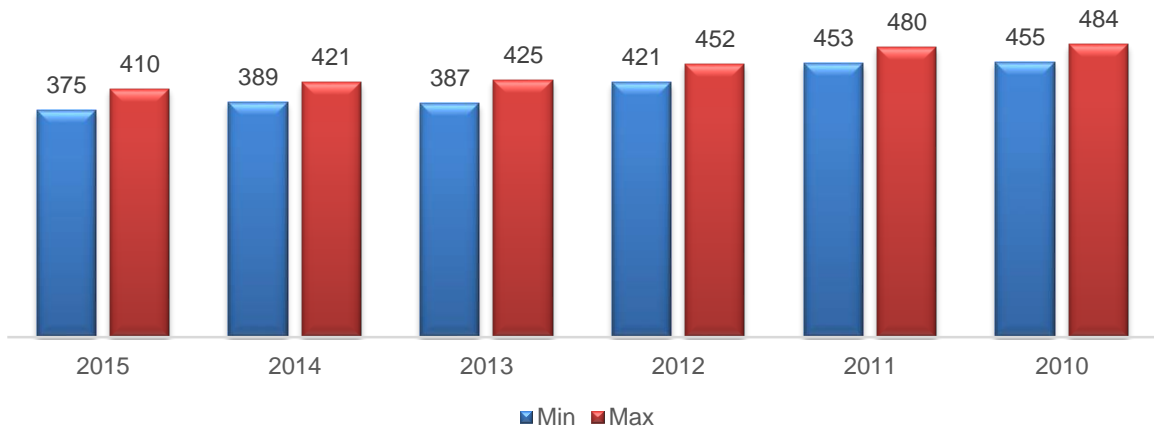
### 2011-2016 Minimum-Maximum SSPC Scores (30%)



### 2011-2016 Minimum-Maximum-Average Rankings (30%)



### 2011-2016 Minimum-Maximum SSPC Scores (100%)



### 2011-2016 Minimum-Maximum-Average Rankings (100%)

